



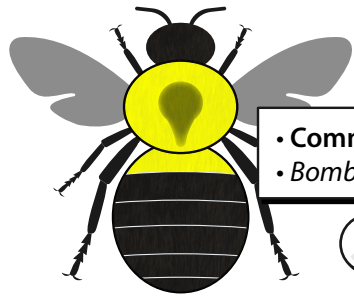
Friends of the Earth Canada's

Great Canadian BUMBLE BEE COUNT



CENSUS CARD FOR BUMBLE BEES OF EASTERN CANADA

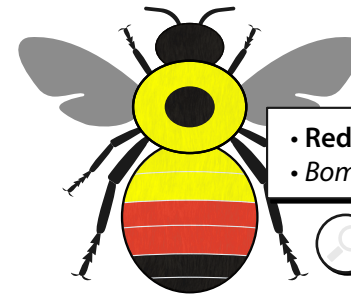
SPOT A BEE SNAP A PHOTO SUBMIT TO FOE CANADA



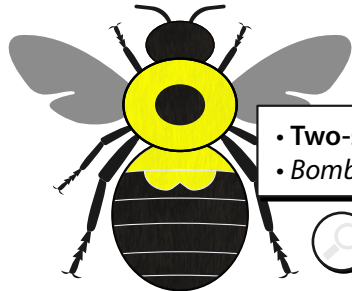
• Common eastern bumble bee
• *Bombus impatiens*



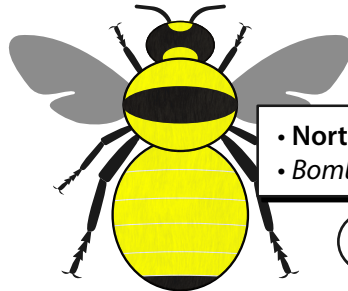
• Tri-coloured bumble bee
• *Bombus tenarius*



• Red-belted bumble bee
• *Bombus rufocinctus*



• Two-spotted bumble bee
• *Bombus bimaculatus*



• Northern amber bumble bee
• *Bombus borealis*

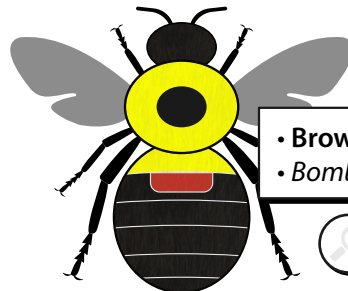


• Half-black bumble bee
• *Bombus vagans*

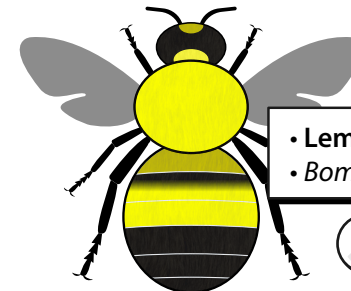


ENDANGERED

• Rusty-patched bumble bee
• *Bombus affinis*



• Brown-belted bumble bee
• *Bombus griseocollis*



• Lemon cuckoo bumble bee
• *Bombus citrinus*



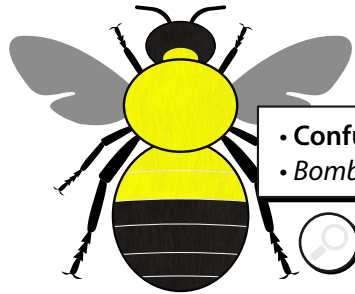
Bumble bees are critical for pollinating food crops and wild plants.
You can help conduct the census of bumble bees in Canada by using this card to help identify bees and submit your photos and observations to: foecanada.org/en/census-form




Friends of the Earth
Les Ami(e)s de la Terre



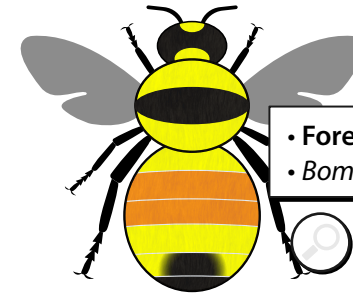
Note: female bees are depicted with their species' colour. For a more comprehensive list, please refer to our online ID page: foecanada.org/en/id-east




• Confusing bumble bee
• *Bombus perplexus*




• American bumble bee
• *Bombus pensylvanicus*



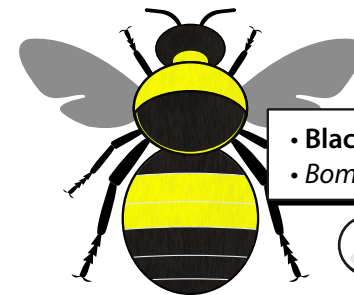
• Forest bumble bee
• *Bombus sylvicola*



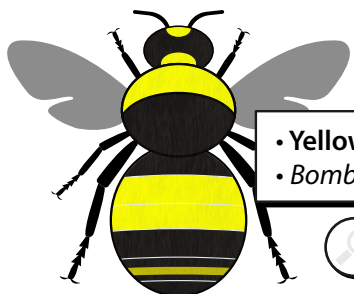
• Sanderson bumble bee
• *Bombus sandersoni*



• Nevada bumble bee
• *Bombus nevadensis*

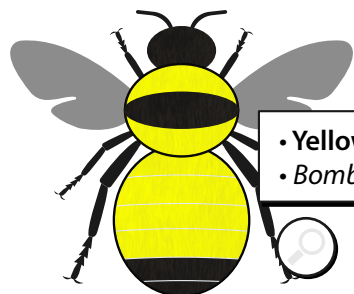


• Black and gold bumble bee
• *Bombus auricomus*

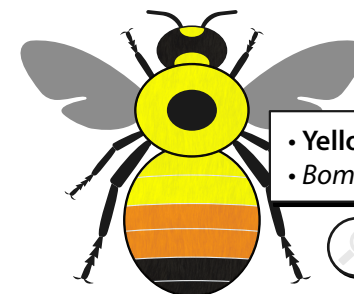


NEEDS PROTECTION

• Yellow-banded bumble bee
• *Bombus terricola*



• Yellow bumble bee
• *Bombus fervidus*



• Yellow head bumble bee
• *Bombus flavifrons*